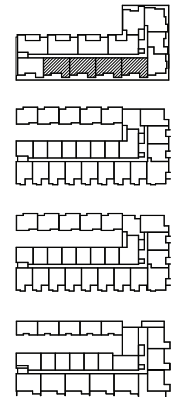
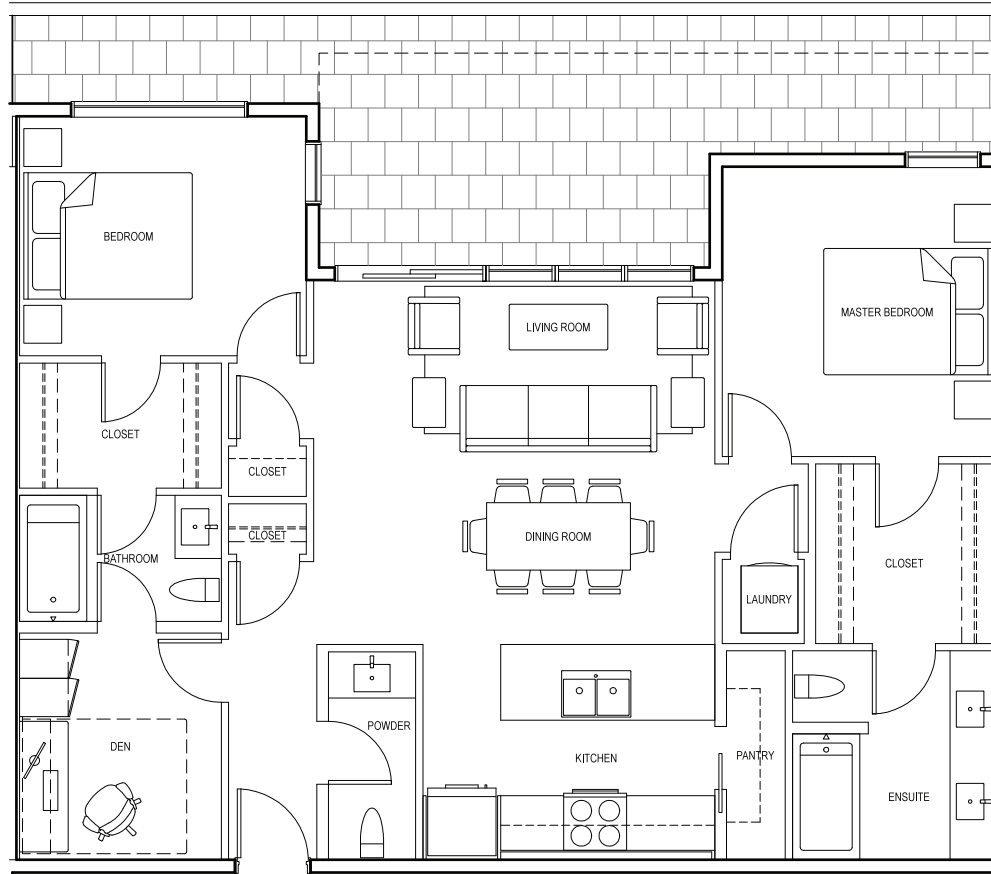




2 BEDROOM, 2.5 BATHROOM + DEN  
**INTERIOR: 1,021 NET SQ.FT. / 1,095 GROSS SQ.FT**  
**EXTERIOR: 262 SQ.FT.**



\* In simple terms, the difference between the gross and net square foot measurements are as follows:  
• The net sqft measures the total floor area, and is aligned with the Residential Measurement Standard set by the Calgary Real Estate Board.  
• The gross sqft measures the total floor area plus everything inside the walls. This standard aligns with the Building Owners and Managers Association.  
This floor plan is a representation only and does not account for customizations to be included. The developer reserves the right to make modifications and changes to plans, features, amenities, services and prices, which are subject to change without notice. All sizes and dimensions are approximate and the actual area and dimensions may vary from the preliminary plans to the final survey. Furniture layouts depict standard furnishing sizes and are intended for reference only. Errors and omissions excepted. Rev 02

